



Students Making It a Little Easier

WHO ARE WE?

We are a Big Buddy/Small Buddy volunteer program in collaboration with Children's Hospital, the American Cancer Society, and LSUHSC School of Medicine.



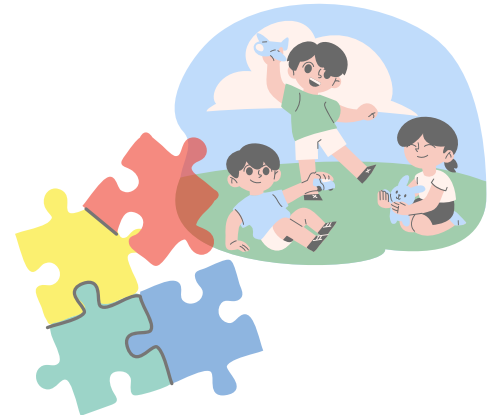
OUR EXECUTIVE BOARD

President: Hinali Patel (hpat12@lsuhsc.edu)

Vice President: Cassidy Nguyen (cngu33@lsuhsc.edu)

Secretary: Christy Nguyen (cngu34@lsuhsc.edu)

Treasurer: Raj Patel (rpat21@lsuhsc.edu)



WHAT DO WE DO?

Students are paired with pediatric hematology/oncology patients based on common interests and personalities. We provide patients with support and companionship when in clinic or hospitalized at Children's Hospital.



WHAT WILL YOU DO?

Your level of involvement is fully up to you- this is great for a busy med school schedule!

Amount and type of interaction depends on the child's health and COVID regulations.

BECOME A SMALL GROUP LEADER!

Students can apply to lead a small group and coordinate visits with their buddy's family. This is a great way to gain leadership experience and support the families we work with!

