

PLASTIC AND RECONSTRUCTIVE SURGERY INTEREST GROUP (PARSIG)

MEMBERSHIP

DUES: **\$20**

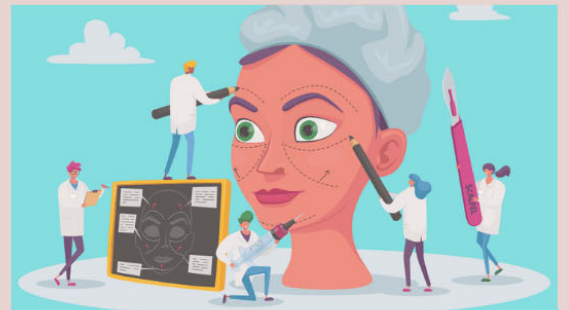
Includes PARSIG T-shirt
& food at in-person
meetings

SIGN UP SHEET



OPPORTUNITIES:

- Suture clinics
- Presentations by faculty and residents - learn about the subspecialties within plastic and reconstructive surgery
- Research opportunities
- Match panels
- And more!



EXECUTIVE BOARD

President: Julianne Guercio (jguerc@lsuhsc.edu)

Vice President: Cade Harkrider (rharkr@lsuhsc.edu)

Secretary: Mary Kate Lee (mlee23@lsuhsc.edu)

Treasurer: Ethan Leoni (eleoni@lsuhsc.edu)