



# Departmental News

Department of Pediatrics ~ LSUMC New Orleans

## KUDOS KORNER

The American Academy of Pediatrics' Department of Education has recognized **Robin English, MD** for her dedicated volunteer commitment and contributions to the Pediatrics Review and Education Program (PREP) Self-Assessment Editorial Board over the past six years. The Director of the AAP's Department of Education, Dr. Robert Perelman, penned a letter to Dr. Sorensen recognizing the support of Dr. English and the LSU School of Medicine at Children's Hospital and thanked Dr. English for contributing the type of high-value continuing education needed by pediatricians.

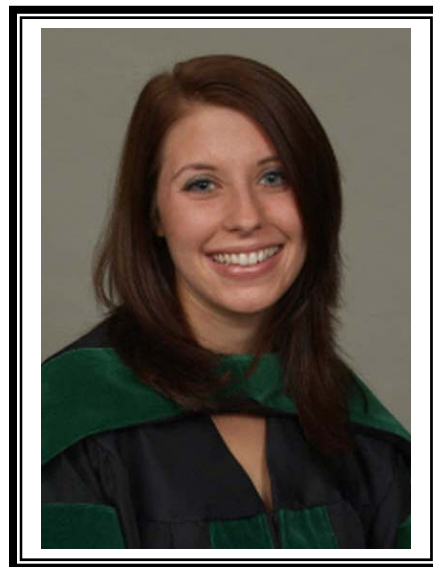
Kudos to **Matti Vehaskari, MD** who was elected to the Council of American Society of Pediatric Nephrology. He also started serving as the Chair of the Pediatric Nephrology Sub-Board of the American Board of Pediatrics on January 1, 2012.

Chief Resident **Kelly Lastrapes, MD** was elected into the Louisiana Chapter of the Alpha Omega Alpha Medical Honor Society back in March.

Pediatric residents **Chelsey Sandlin, Michael Blancaneaux, Marcie Houser, and Heidi Murphy** spoke about their experiences in pediatrics and as pediatric residents at a recent Pediatric Interest Group meeting downtown at LSUHSC. Attendees included first and second year medical school students with future interests in pediatrics. These four residents did an excellent job informing our future doctors and represented their peers and our department in an exemplary manner!

Kudos to **Katie Bruno, MD**, third-year Pediatrics Resident, who was one of the winners of the annual "Excellence in Teaching Award" from the Aesculapian Society. Each year the society asks medical students to select their favorite professors, residents and interns. Nominees and winners are chosen for their leadership, quality of instruction, approachability, and overall excellence in teaching. Several members of the department were nominated for awards:

## *Aesculapian Society's Excellence in Teaching Award*



Katie Bruno, MD

### *Faculty Nominees:*

**Bonnie Desselle, MD**  
**Robin English, MD**  
**Christian Lilje, MD**  
**Melissa Roy, MD**  
**Maria Velez, MD**

### *Junior Faculty Nominees:*

**Melissa Roy, MD**

### *Resident Nominees:*

**Katie Bruno, MD**  
**Hitesh Chheda, MD**  
**Adrienne Musumeche, MD**  
**Stephen Sanches, MD**

### *Intern Nominees:*

**Kate Caldwell, MD**  
**Jeffrey Franklin, MD**  
**Chuck Haydel, MD**  
**Lauren Hernandez, MD**  
**Krystal Jerry, MD**  
**Cassandra Krieger, MD**

---

## WELCOME TO NEW HIRES



The department extends a warm welcome to several new hires:

**Ivy Wilson Terrell, MPH**, Coordinator of Medical Services in Adolescent Medicine, started back in September of last year.

**Raphaela Degette, BA** began her position as a Coordinator of Medical Services in the Adolescent Medicine Division in November.

The Division of Genetics welcomed **Amy Molina, BSN** as a Clinical Associate in December.

**Tracey Todd, BS**, Research Associate, started working with Dr. Janet Rossi in the Critical Care Division in January.

**Tabitha Washington, MHA** also joined the department in January. She is the new Coordinator of Non-Academic Area in the school-based health clinics.

**Kelly Allerton, BA** is now the Fellowship Coordinator for the seven pediatric subspecialty programs as of March 1, 2012.

The Nephrology Division welcomed a familiar face back in February. **Caroline Straatmann, MD**, who finished her fellowship in December, is now Clinical Assistant Professor. Her appointment began on February 1<sup>st</sup>. Dr. Straatmann received her medical degree at LSUHSC-Shreveport in 2004. She completed her residency within the department in June 2007 and served as Chief Resident from 2007-2008.

## NEW PEDIATRIC INTERNS

**Sarah Black**  
Medical College of Georgia

**Danielle Eggie**  
LSU - New Orleans

**Julie Gallois**  
LSU - New Orleans

**Kevin Gipson**  
LSU - New Orleans

**Elizabeth Lindley**  
LSU - Shreveport

**Nabila Malik**  
Oklahoma State University  
College of Osteopathic  
Medicine

**Casey McAtee**  
University of Alabama

**Anna McFarlin**  
University of South Florida

**Amanda Messer**  
LSU - New Orleans

**Megan Murphy**  
Tulane University

**Katie Price**  
LSU - Shreveport

**Hope Pritchett**  
University of South Alabama

**Amy Prudhomme**  
Kansas City University

**Lauren Raney**  
Medical College of Georgia

**Paul Remedios**  
LSU - New Orleans

**Alison Saulog**  
Southern Illinois University

**Elizabeth Wisner**  
LSU - New Orleans

## NEW MED/PEDS INTERNS

**Aman Dulai**  
Ross University

**Lori Gautreaux**  
LSU SOM Shreveport

**Jennifer Krauland**  
A.T. Still University,  
School of Osteopathic  
Medicine

**Kieran Leong**  
Touro College of  
Osteopathic Medicine

**Mallory Smith**  
Ross University

**Alex Wright**  
LSU - Shreveport



---

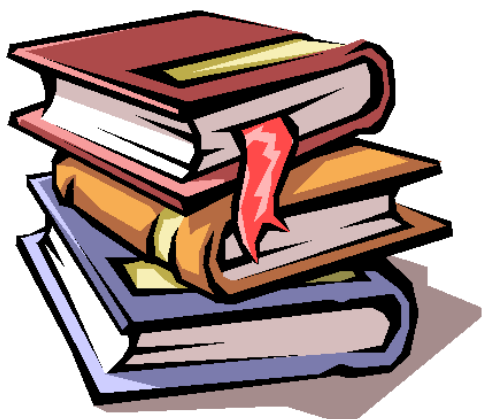
## PUBLICATIONS, PRESENTATIONS AND MEETINGS

“Functional Role of an Islet Transcription Factor, INSM1/IA-1, on Pancreatic Acinar Cell Transdifferentiation” will be published in the *Journal of Cell Physiology* in June 2012. Authors included **Tao Zhang, PhD**, a post-doctoral student in Dr. Michael Lan’s lab, **Nicolle Saunee, MS**, Research Assistant in Dr. Lan’s lab, **Mary Breslin, PhD**, **Kejing Song, DVM, MS**, and **Michael Lan, PhD**.

**Jim Hempe, PhD, Amanda McGehee**, Research Assistant in Dr. Hempe’s Lab, **Daniel Hsia, MD**, former Med/Peds Resident, and **Stuart Chalew, MD** authored “Characterization of unstable hemoglobin A1c complexes by dynamic capillary isoelectric focusing.” The paper was published in the *Analytical Biochemistry* in February.

**Seth Pincus, MD** and two of his graduate students traveled to Galveston, TX last month to present posters at the Gordon Research Conference - Antibody Biology & Engineering. **Ryan Craig, MS**, MD/PhD graduate student in Microbiology, Immunology and Parasitology, presented a poster titled “Engineering Dual Variable Region Antibodies Specific for HIV gp120 and gp41” and **Michael Valentine, PhD** graduate student in Microbiology, Immunology and Parasitology, presented “Eradication of Latent HIV Reservoirs with Antibodies and Immunoconjugates: A macaque model and two therapeutic approaches”.

**Ping Wang, PhD** attended the Keystone Symposia Global Health Series, Fungal Pathogens: From Basic Biology to Drug Discovery held January 15 - 20, 2012 in Santa Fe, New Mexico.



## ANNOUNCEMENTS

The Research Institute for Children and the Department of Pediatrics have established the **Intramural Clinical and Translational Grants Program** with the goal of providing initial funding to facilitate the maturation of new research ideas that will directly influence and improve the health and welfare of children. The program aims to develop these ideas into competitive applications for support from extramural agencies. Awards are available for all faculty rankings. The first cycle concluded with an application deadline in late March. Those awards should be announced no later than early May. The next application deadline is July 27, 2012. If you have any questions or would like more information, contact **Natasha Haynes** (nhaynes@chnola-research.org) or **Stewart Chalew, MD** (schale@lsuhsc.edu).

## RESEARCH DAY 2012



Mark your calendars! Research Day 2012 will be held on Friday, June 22. All faculty, fellows, research associates, residents and students of the Department of Pediatrics and Research Institute for Children are invited to submit abstracts. All presentations will be given as posters and a small number of abstracts will be selected to be given orally based on scientific review of the abstract. Presentations will be judged on the following criteria:

- **Research:** clarity in stating the problem and hypothesis, explanation of results, meaningful conclusion offered, impact of work is identified and future experiments/needs are outlined;
- **Design:** identification of important variables, appropriateness of research equipment, recognition of limitations in the data, degree to which the data supported the conclusions, originality of the research topic, proper incorporation of controls groups;
- **Poster:** effective use of tables and/or figures in presenting data, accuracy of spelling and grammar, neatness and organization of poster.



## YOGA CLASSES

The LSUHSC Wellness Center will host a yoga class at Children's Hospital every Tuesday from 12:15pm – 1:00pm. Classes are only open to LSUHSC employees and their spouses. Please bring your own mat.

The style of yoga the instructor, Rolf Vananders, teaches is yoga-flow. It is a low-impact, high-yield style that utilizes flowing movement to develop strength, flexibility, concentration, mindfulness, inner harmony, balance and postural alignment. This is an all-levels course so everyone is welcome!

Some of the many benefits of yoga include:

- ~ Flexibility, strength, balance and alignment of body/mind
- ~ Stronger bones, increase range of motion & agility
- ~ Improved cardiovascular functioning
- ~ Serenity, mindfulness & stress management
- ~ Healthy back & stronger core
- ~ Pain reduction & a deeper, restful sleep
- ~ ENERGIZE the mind/body system
- ~ Stimulation & massage of the internal organs
- ~ Increase stamina, self-confidence, resilience & boost immunity

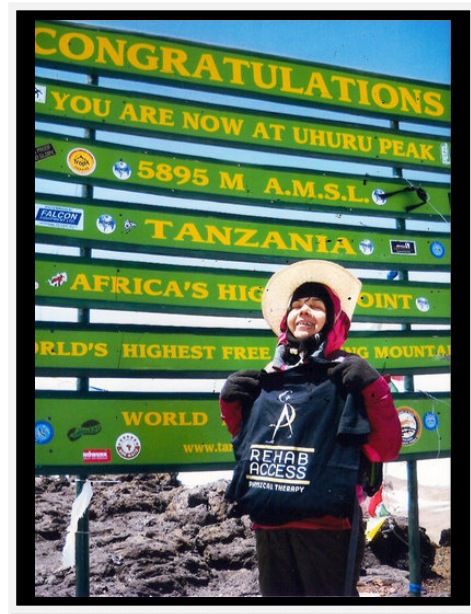
Please see the below schedule and mark your calendars. There are several exceptions in the first few months. Note: the first Tuesday of every month will always be in the Tower 2 Conference Room (in place of the Residents' Noon Conference).

### YOGA SCHEDULE:

*All classes 12:15 – 1:00pm*

<b>Tues MAY 1</b>	2 Center
<b>No class week of May 7</b>	
<b>Tues MAY 15</b>	Auditorium
<b>Tues MAY 22</b>	Auditorium
<b>Tues MAY 29</b>	Auditorium
<b>Tues JUN 5</b>	2 Center
<b>Tues JUN 12</b>	Auditorium
<b>Tues JUN 19</b>	Auditorium
<b>Tues JUN 26</b>	Auditorium
<b>Tues JUL 3</b>	2 Center
<b>No class week of July 9</b>	
<b>Tues JUL 17</b>	Auditorium
<b>Thurs JUL 26</b>	Auditorium

## DR. RAO'S MOUNTAIN EXPEDITION



**Jayashree Rao, MD** is making the most of her retirement. She embarked on an adventure recently, spending nine days climbing 15,000 feet to the summit of Mt. Kilimanjaro. After being diagnosed with a meniscus tear in her left knee, Dr. Rao decided to skip surgery and train for the trek up the African mountain. Her story was featured in a *Times Picayune* article last week: [http://blog.nola.com/westbank/2012/04/algiers\\_resident\\_makes\\_it\\_to\\_t.html](http://blog.nola.com/westbank/2012/04/algiers_resident_makes_it_to_t.html)

Dr. Rao retired from her post as Associate Professor of Pediatrics, Division of Endocrinology, in March 2007.

## UPCOMING EVENTS

<b>May 28</b>	Memorial Day Holiday
<b>June 15</b>	Faculty Meeting @ noon, Auditorium Hello/Good-bye @ 4:00pm, Auditorium
<b>June 22</b>	Research Day, Auditorium
<b>August 17</b>	Faculty Meeting @ noon, Auditorium

# FACULTY DEVELOPMENT: **ACGME Next Accreditation System**

By Bonnie Desselle, MD

Fellowship, residency program and associate program directors: please be aware that the ACGME has changed its accreditation system. Some highlights of the new program include:

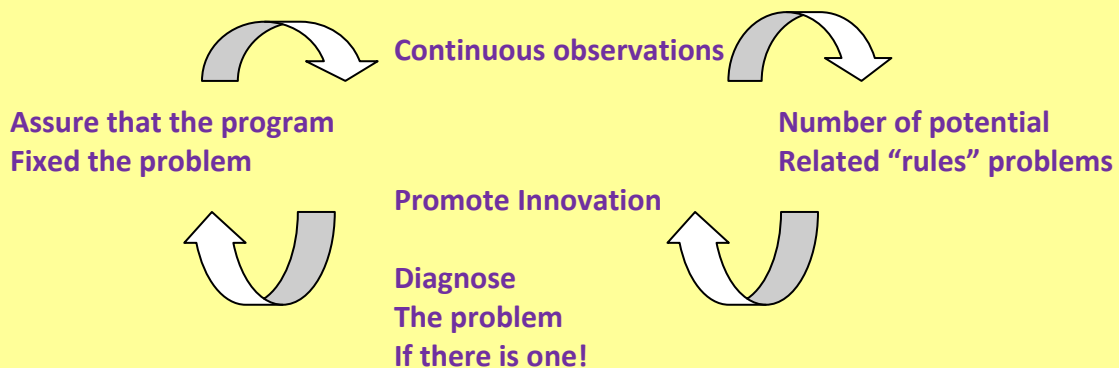
**Goals:** To begin the realization of the promise of the Outcomes Project

- To free good programs to innovate
- To assist poor programs in improving
- To reduce the burden of accreditation

**How is it different?**

- Continuous accreditation
  - Annual reporting
    - Resident and faculty surveys
    - Milestones data
    - Board pass rates
    - And...more to TBA

**Conceptual change to....**



**Incorporate the Milestones into the future**

Use Milestones to track a resident's achievement of the sub-competencies

**When does this start?**

July 2013

Source: ACGME Annual Report given at APPD conference, Joe Gilhooly MD, Chair, RRC of Pediatrics.  
[www.acgme.org](http://www.acgme.org), [www.appd.org](http://www.appd.org)