

EMERGENCY DEPARTMENT

CALS, 1st Floor, 2021 Perdido St., New Orleans, LA 70112



The ED's unique design offers mass casualty, rapid response team training, and first responder preparation using active learning and hands-on training in teams.

Emergency Department totals 2880 sq./ft. EM simulation room has a total of 10 bed spaces, 2 bed trauma suite and 8 monitor patient beds with complete nursing station.



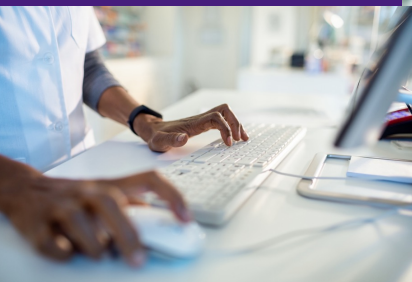
ED ramp offers real life training for all levels of healthcare professionals. Patient hand-off, from EMS to resuscitation team.



Team training using 14 high-fidelity patient simulators, infants though adults. Cost-effective training.



Interprofessional training using deliberate practice and closed-loop communication.



Healthcare trainees can train and learn from each other without the fear of harming the patient. Reducing medical errors in a risk-free space.



REAL IMPACT

ON THE LIVES, HEALTH, AND ECONOMY OF LOUISIANA



A NATIONAL TRAILBLAZER

IN HEALTH PROFESSIONAL EDUCATION