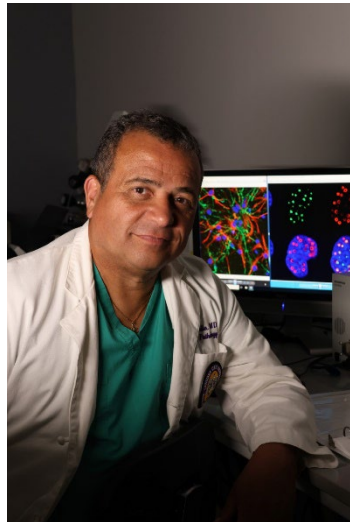


Dr. Luis Del Valle  
 Associate Professor  
 Director, Molecular Histopathology & Analytical Microscopy Core

Education

Universidad Nacional Autónoma de México	MD	1990	Medicine
Hospital General de México	Residency	1994	Anatomic Pathology
Thomas Jefferson University	Postdoctoral	1995	Neuropathology
MCP-Hahnemann University	Postdoctoral	1999	Neurovirology



With more than 20 years of experience in general pathology, neuropathy, immunohistochemistry and microscopy, Dr. Del Valle is leading the Molecular Histopathology Core Laboratories. Dr. Del Valle's research centers on working with pathology experts on the interpretation of molecular pathology methodologies and immunohistochemical experiments.

His most significant and productive field has been the study of the mechanisms of PML pathogenesis. PML is a fatal demyelinating disease that causes damage to the protective covering that surrounds nerve fibers in the brain frequently seen in individuals with AIDS and other immunosuppressive conditions.

In addition, he has successfully directed research to help understand the molecular mechanisms of malignant transformation and the development of brain tumors.

**Positions and Scientific Appointments**

- 2010 - Present Associate Professor Department of Medicine & Department of Pathology, LSU Health New Orleans, Louisiana
- 2007 - 2010 Associate Professor Department of Neuroscience, Neuropathology Core, Temple University School of Medicine, Philadelphia, Pennsylvania
- 2005 - 2007 Assistant Professor Department of Neuroscience and Center for Neurovirology, Temple University School of Medicine, Philadelphia, Pennsylvania
- 2001 - 2005 Assistant Professor Center for Neurovirology & Cancer Biology, Temple University, Philadelphia, Pennsylvania
- 1999 - 2000 Assistant Scientist Center for Neurovirology & Cancer Biology, Temple University, Philadelphia, Pennsylvania
- 1997 - 1999 Postdoctoral Fellowship (Neurovirology). Center for Neurovirology and Neuro-Oncology, MCP-Hahnemann University, Philadelphia, Pennsylvania

- 1995 - 1997 Postdoctoral Fellowship (Neuropathology). Department of Pathology, Thomas Jefferson University, Philadelphia, Pennsylvania
- 1994 - 1995 Medical Fellowship (Neuropathology) Department of Neuropathology, National Institute of Neurology and Neurosurgery, México D.F. México
- 1990 - 1993 Medical Residency (Pathology). Pathology Department, Hospital General de México, México

#### Honors

- 2012 - 2013 LSU School of Medicine Alumni Excellence Award in Teaching, LSU
- 2012 - 2013 Resident Education & Commitment Award. Department of Pathology, LSU
- 2005 - 2008 Member of the Temple University \$1 Million Research Awards Club
- 2004 Selected as inaugural member of the Temple University \$1 Million Research Awards Club