

# LSUHSC PEDIATRIC RESIDENTS 2023 – 2024:

## PROGRAM LEADERSHIP



Chelsey Sandlin, MD  
Program Director



Lauren Davis, MD  
Associate Program  
Director



Jay Hescocock, MD  
Associate Program  
Director



Suzanne LeFevre, MD  
Associate Program  
Director



Christy Mumphrey, MD  
Associate Program  
Director

## CHIEF RESIDENTS



Paige Prevot, MD  
LSUHSC-NO



Joey Sansone, MD  
LSUHSC-NO

## PL III



Amanda Barkemeyer, MD  
LSUHSC-NO



Karleigh Barkemeyer, MD  
LSUHSC Shreveport



Peyton Bennett, DO  
Alabama College of  
Osteopathic Medicine



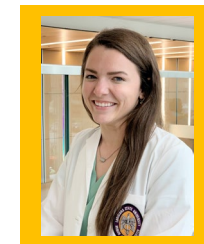
Anna Simon, MD  
University of Virginia



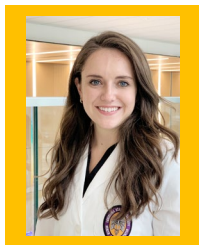
Jantzen Collette, MD  
LSUHSC-NO



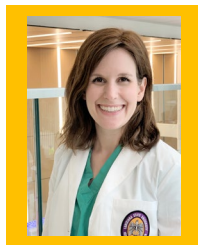
Will Fernandez, MD  
LSUHSC Shreveport



Amanda Granier, MD  
LSUHSC-NO



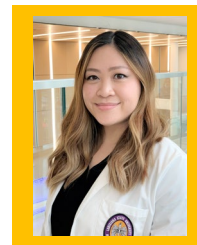
Mariah Humphrey, MD  
University of South Carolina



Riley Jay, MD  
Medical College  
of Georgia



Taylor Jones, MD  
Texas A&M



Hannah Nguyen, DO  
University of North  
Texas



Adam Prevot, MD  
LSUHSC-NO



Karlie Ragas, MD  
LSUHSC-NO



Judston Robinson, MD  
LSUHSC-NO



Corinna Victor, MD  
Florida International  
University

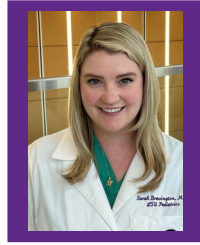
## PL II



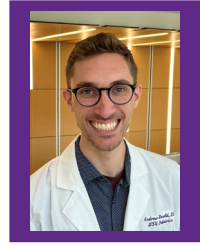
Stephanie Abazie, MD  
University of Texas  
Medical Branch



Alexis Brantley, MD  
University of Mississippi



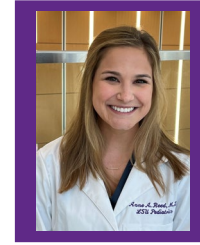
Sarah Brewington, MD  
Eastern Virginia  
Medical School



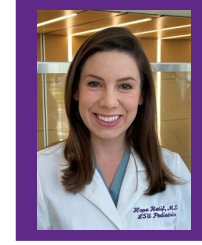
Andrew Harold, DO  
Kansas City University  
College of Osteopathic  
Medicine



Shivani Patel, DO  
Philadelphia College  
of Osteopathic Medicine



Anne Reed, MD  
LSUHSC-NO



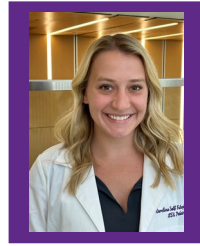
Hope Retif, MD  
LSUHSC-NO



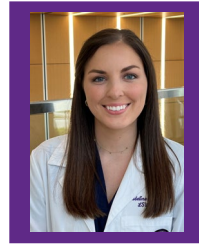
Madeleine Robert  
Stansberry, MD  
LSUHSC-NO



Alanna Sam, MD  
University of Missouri



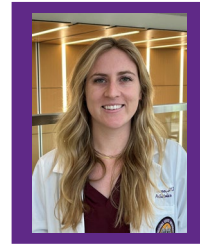
Caroline Self, MD  
LSUHSC-NO



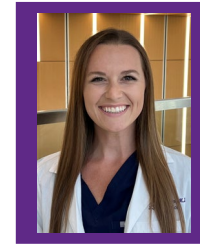
Madeline Shannon, MD  
LSUHSC-NO



Nicholas Tadros, DO  
Edward Via College of  
Osteopathic Medicine



Morgan Viviano, MD  
University of  
Queensland



Kathryn Wiggins, MD  
LSUHSC Shreveport



Sneha Yadlapati, MD  
LSUHSC-NO

## PL I



William Arnold, MD  
LSUHSC-NO



Ushma Bhandary, MD  
LSUHSC-NO



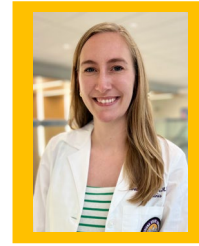
Chandler Cissel, MD  
University of Louisville



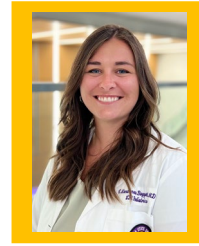
Andraya  
Dickens-Chang, MD  
University of Nevada



Lexi Glaser, MD  
Northeast Ohio  
Medical University



Meredith Kovach, MD  
Tulane University



Casey Landreneau  
Baggett, MD  
LSUHSC-NO



Aaliyah Saafir, MD  
Howard University



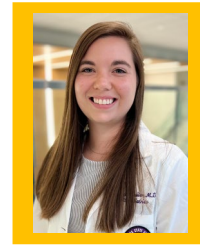
Danielle Sketchler, MD  
LSUHSC-NO



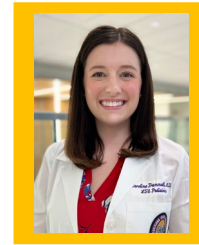
Leah Smith, DO  
West Virginia School of  
Osteopathic Medicine



Sarah Stobbs, MD  
LSUHSC-NO



Courtney Suiter, MD  
East Tennessee  
State University



Caroline Trammell, MD  
LSUHSC-NO



Darius Williams, MD  
University of Mississippi



Zaria Williams, MD  
Howard University



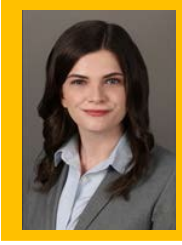
# LSUHSC MEDICINE / PEDIATRIC RESIDENTS 2023 – 2024:

## PROGRAM DIRECTOR



Kate Brown, MD

## CHIEF RESIDENTS



Meaghan Bank, MD  
Charles Schmidt

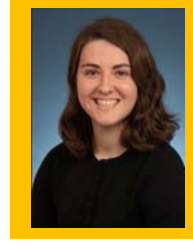


Emily Riley, MD  
University of Arkansas

## PL IV



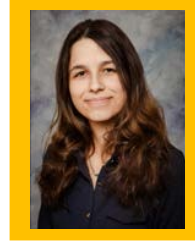
Lauren deLeon, MD  
St. George's University



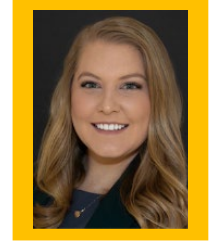
DeLane Hise, DO  
Lake Erie



Nataliya Khimitch, MD  
American University of  
the Caribbean



Ashley Misky, DO  
Lincoln Memorial  
University



Cassie Shaw, MD  
University of Alabama

## PL III



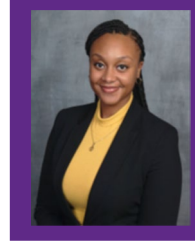
Sara Anderson, MD  
Tulane University



Brooke McVaney, DO  
West Virginia



Vivek Patel, DO  
Edward Via College of  
Osteopathic Medicine



Taylor Sanders, MD  
LSUHSC-NO

## PL II



Chloe d'Aquin, MD  
LSUHSC-NO



Nali Gillespie, MD  
Duke University



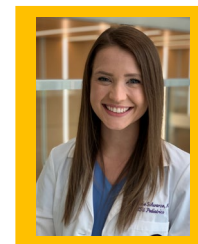
Samuel Maltby, MD  
University of Colorado



Tejal Naik, MD  
The Brody School of  
Medicine



Carter Pesson, MD  
LSUHSC-NO



McKenzie Schwarze, MD  
University of Illinois

## PL I



Arati Joshi, MD  
University of Tennessee



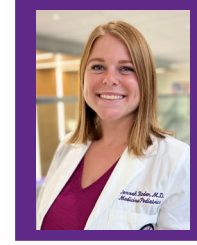
Andree Judd, DO  
Edward Via College of  
Osteopathic Medicine



Lexi Lapointe, DO  
Philadelphia College of  
Osteopathic Medicine



Hina Qureshi, MD  
University of Mississippi



Hannah Rader, MD  
Saint James School  
of Medicine Anguilla



Amelia Young, DO  
Liberty University College of  
Osteopathic Medicine

# LSUHSC PEDIATRIC / EMERGENCY MEDICINE RESIDENTS 2023 – 2024:

## PROGRAM DIRECTOR



Anna McFarlin, MD

## PL V



Mayra Ramirez, MD  
New York Medical College

## PL IV



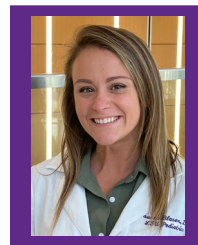
Erin Asher, DO  
Western University

## PL III



Jodi Chatters, MD  
LSUHSC-NO

## PL II



Lauren Blasen, DO  
Michigan State University

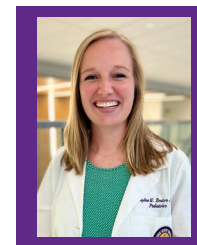


Jonah Gevercer, DO  
Rocky Vista University

## PL I



Jessica Aird, DO  
University of North Texas



Baylee Bruton, MD  
Mercer University